

# Engineered Solutions **Heavy Industry Gearing**

Overview of heavy industry gearing solutions for the USA and the world



# A global family company since 1931

SEW-EURODRIVE provides innovative drive and automation solutions through a global network of manufacturing and assembly facilities.

Combining German engineering with local production, we deliver customer-focused solutions backed by worldwide expertise in research, engineering, and technology.



**57**  
Countries



**22,700**  
Employees

**850**  
Research & Development  
Employees



**18**  
Production Plants

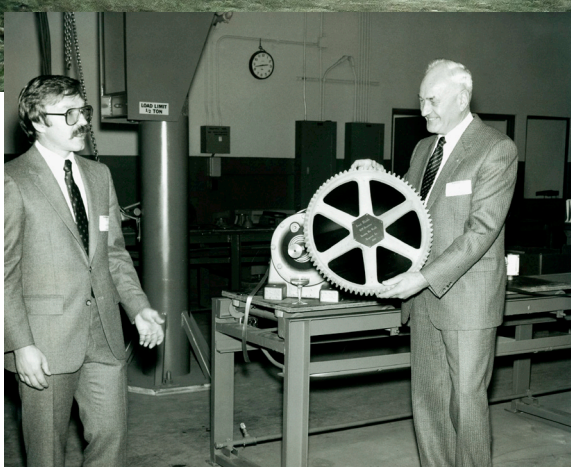


**"People don't want products, they want solutions."**

- Ernst Blickle - Süddeutsche Elektromotoren-Werke (SEW)



# Driving the USA for over 50 years



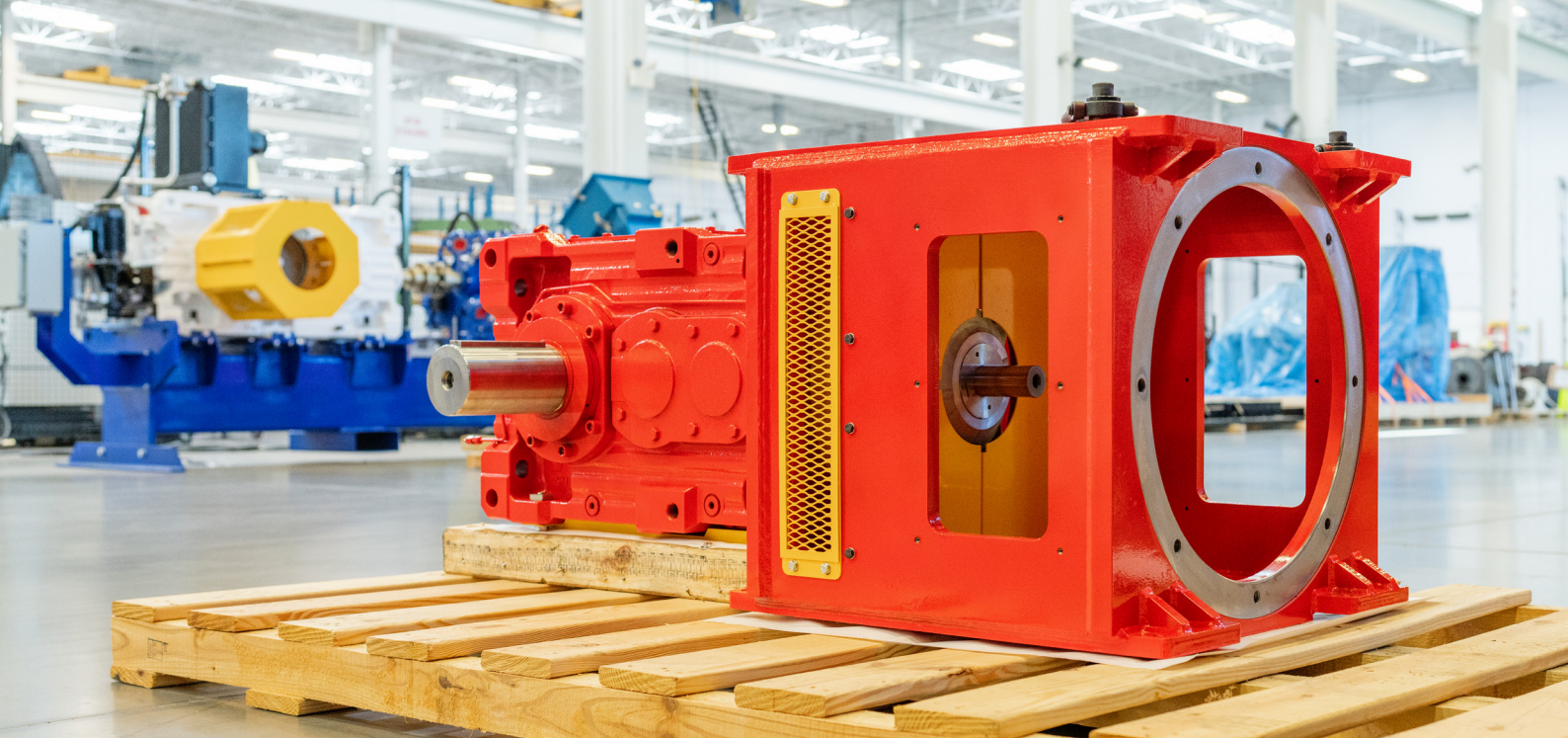
*Ernst Blickle at USA facility, 1980*



*Jürgen Blickle with sons Rainer and Christopher in Wellford, SC.*

For more than 50 years, SEW-EURODRIVE USA has supported American manufacturers with customized gearmotors, drive technologies, and automation solutions.

Since 1983, Wellford, South Carolina, has served as the company's US headquarters and is home to our state-of-the-art heavy industry gearing facilities, as well as manufacturing, assembly, engineering, and service operations.



# Heavy Industry Gearing

We provide heavy-industry gearing solutions, complete inspection and overhaul services for SEW *and* non-SEW gear units, as well as re-engineering upgrades for obsolete equipment. Backed by a nationwide service network and local inventory, we deliver fast, reliable support with short lead times.



**Rapid-delivery**



**Configurable  
drive packages**

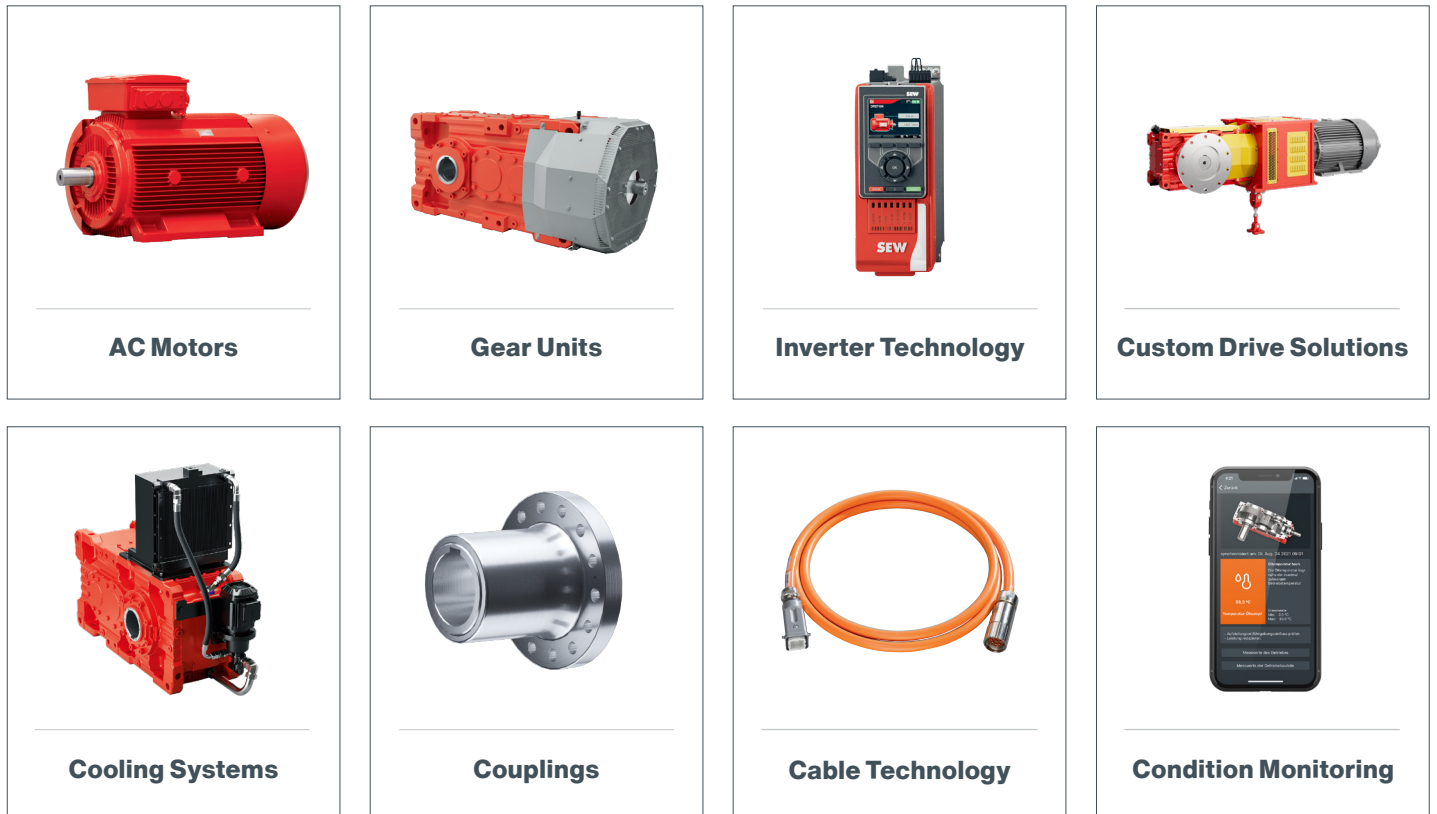


**Fully-custom  
gear units**

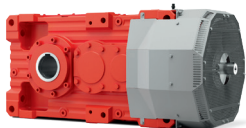
## Industries

- Agriculture
- Airport & Port Logistics
- Building & Construction
- Food & Beverage
- Forestry/Timber
- Mining & Mineral
- Pharmaceutical
- Power Generation
- Pulp & Paper
- Recycling
- Waste Water

## Our offerings include:



## Helical and Helical-Bevel Series



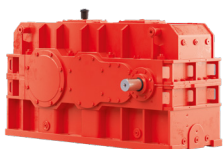
### **X.e Series**

The extensive modular system, along with a wide range of predefined additional equipment and options, provides **exceptional flexibility** to suit your specific application's needs. Whether you are a plant manufacturer or operator, the X.e series offers an ideal solution for every need.



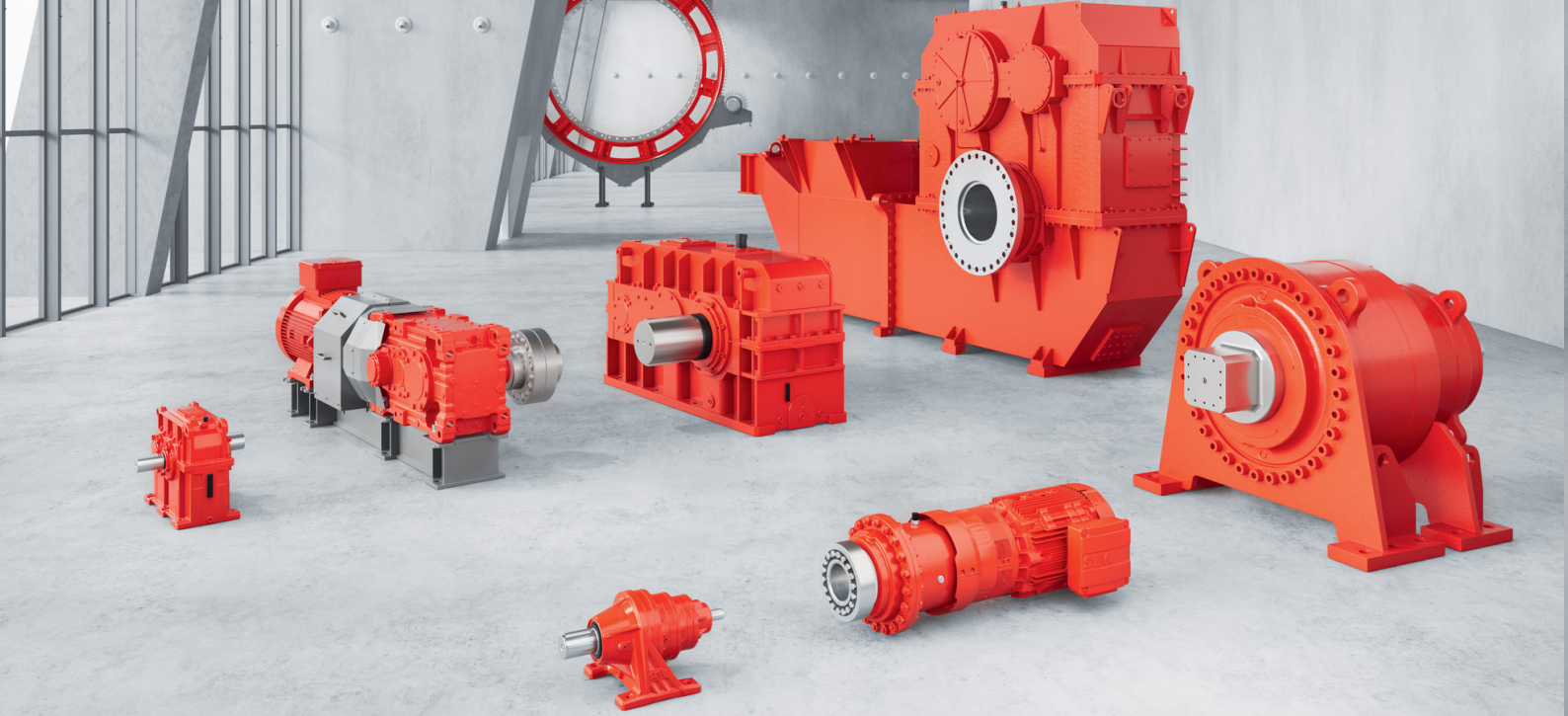
### **M1..N Series**

The M1..N series heavy industry gear units are developed especially for applications that require a **large range of very low ratios**. This ensures that you are using a parallel gear unit that is finely matched to your application.



### **ML..2 Series**

Our **biggest and most powerful** standard parallel and right-angle series. Numerous options and additional designs are available for these heavy duty gear units, enabling you to create a tailor-made solution entirely in line with your requirements.



## Planetary Series

---



### P Series (P.K, P.R, and P-X.e)

Many industries, including bulk materials handling, recycling, wood, and food processing, require drives that are both **compact and robust while delivering high torque**. The modular P series provides the perfect solution to meet these needs.



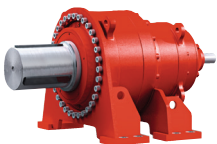
### P2.e Series

These units expand upon the proven P series with direct inputs that **allow for standard shaft fans** and make **lower ratios** possible, unlocking new applications.



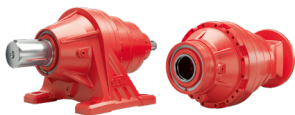
### P-X1KP.e Series

These units offer very **low gear ratios** in a compact **right angle configuration**. With its advanced efficiency and precision engineering, it's the ideal solution for industries where space is limited but exceptional performance is essential.



### XP Series

Our **largest standard planetary drives**, highly compact units designed for **very high torque ratings**. They provide tailored solutions for high-performance applications and their flexibility allows for customization to suit your specific needs.



### PPK Series

Small, compact and powerful. **When space is limited**, these units can provide an alternative solution. Able to be combined with our Standard Geared Motor Range, the options are almost limitless.

---



## XMiner™ Package

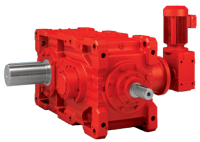
Our XMiner package for the X.e series was specifically engineered in the U.S. for belt conveyor applications in the coal industry.



Learn more

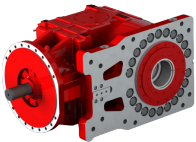
## Application Specific Units

---



### X.e Bucket Elevator Drive

The Bucket Elevator Drive consists of our highly durable X.e series gearbox with integral backstop. Ready to select straight out the catalogue with **full or empty bucket options** for the integrated auxiliary gearmotor.



### AFC Armour Faced (Scraper) Conveyor Drive

This drive is specifically **designed for underground coal mining**, featuring a robust housing with a split and side-mounted configuration for easy maintenance. It includes optimized internal components, dust-proof sealing and an efficient cooling system.



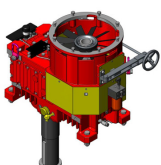
### VTM Vertimill Drive

The drive features a robust gear unit housing and is equipped with P or XP series internal gearing for enhanced performance. Additionally, SEW-EURODRIVE can design custom output shafts to meet specific requirements for **vertical mill applications**.



### WCT (Wet Cooling Tower) Drive

Specifically designed for the **use in wet cooling towers**. It features high mechanical strength to support the fan blades and superior corrosion resistance to handle constant cooling water spray.



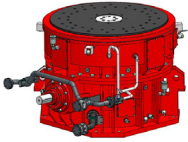
### MACC (Air Cooled Condenser) Drive

Specifically designed for **use in air cooled condensers**. Motor adapter with integrated cooling fan and safety braking system.

---

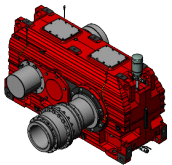
## Application Specific Units Continued

---



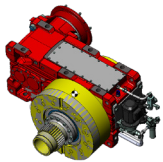
### VRM Vertical Roller Mill Drive

With a three-layer structure and contactless labyrinth seal, it ensures reliable performance. Optimized circular and fan-shaped pads ensure **even load distribution**, while **point-to-point lubrication** directs oil to each gear and bearing for improved longevity.



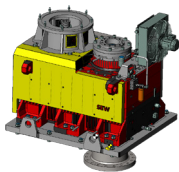
### X.e/MD Mill Drive

Large horizontal mills create unique drivetrain loads. During starting, stopping, or inching, material inertia can cause fluctuating or reversing torque, which must be considered in gearbox design to ensure reliability and long service life.



### X.e/EXT Extruder Drive

Constructed with high-quality X.e gear unit components, the low-speed shaft (LSS) is equipped with a thrust bearing arrangement **tailored to handle high axial loads** and meet the specific operational requirements of extruders.



### X.e/HDFL Flotation Cell Drive

Designed for specialized **mining material separation applications**, this gear housing is optimized to meet non-standard design requirements, enabling it to handle **high torque and complex external forces**. It features an enlarged structure with cooling fins, significantly improving the system's heat dissipation performance.



### X.e Agitator and Mixer Drive

Agitators and mixers often process a wide range of materials under extremely heavy loads. Our application-optimized gear units based on the proven X.e series have a tried-and-tested housing and modern rolling bearings. Both enable the **absorption of high external forces and bending moments**.



### X.e/HC Hoist Drive

Hoist drives in crane applications have special requirements in terms of space and weight. Our X.e/HC series heavy industry gear unit has been specially **designed for driving hoist drums**.

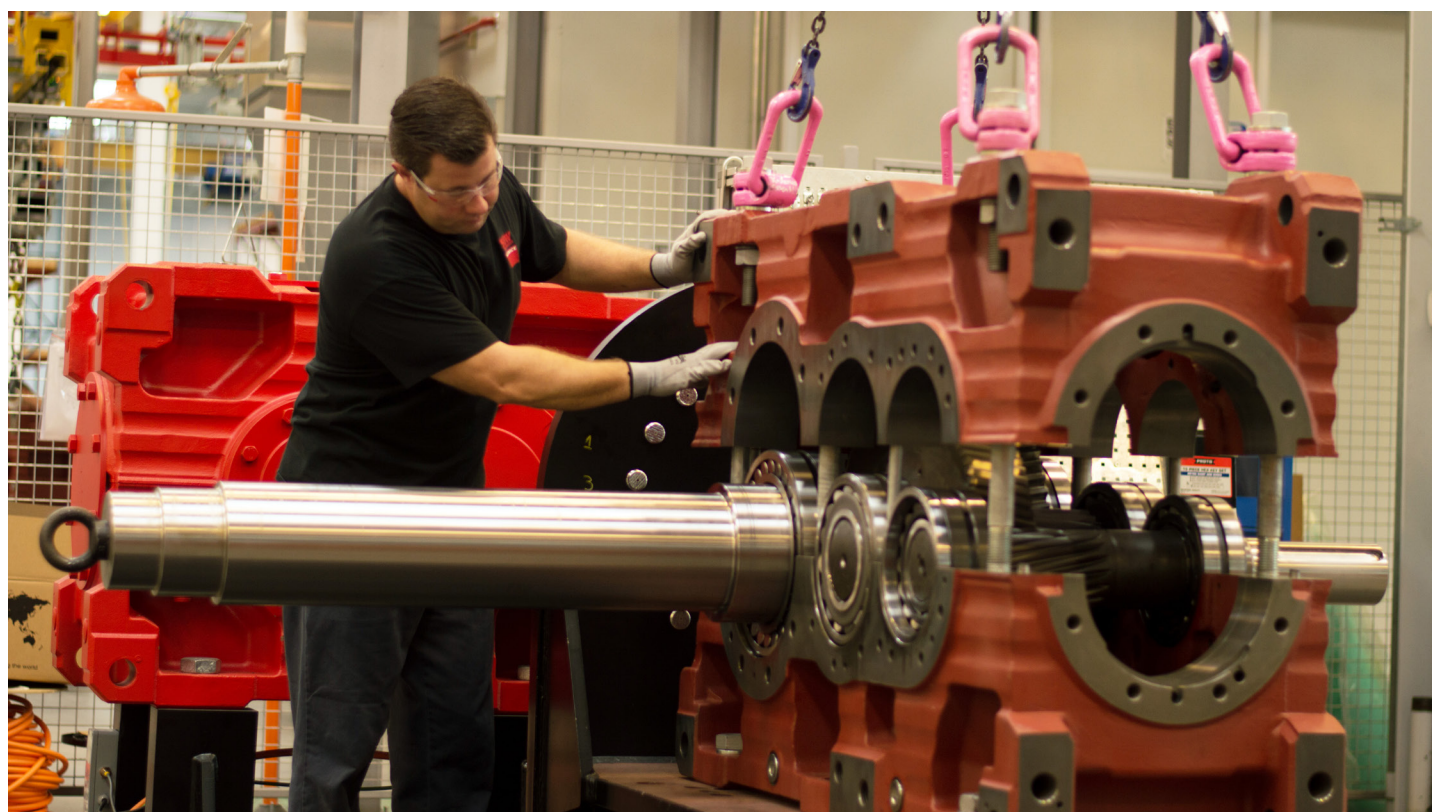


### X.e Thermal Housing (Mining Drive)

For belt conveyor operators and OEMs, the mining drive offers robust, reliable, **low-maintenance performance**, with a **heat-dissipating housing** designed for demanding environments.

## HIG Products Assembled in the US

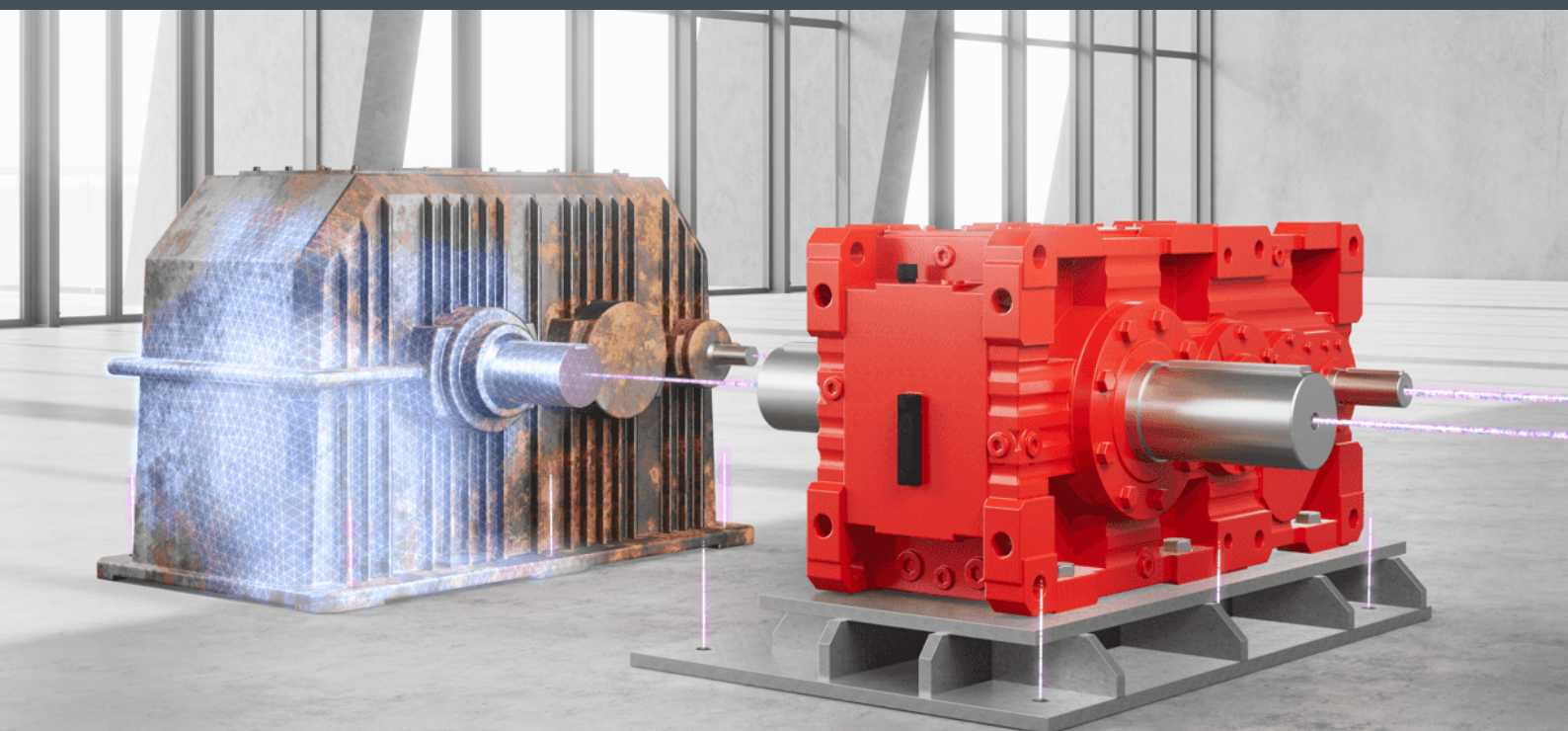
Series	Type	Torque Rating [kNm]	Ratio Range	Stages	Sizes
<b>X.e</b>	Parallel (X.F.e)	7.2 - 185	6.3 - 450	2, 3, 4	100e - 250e (16 sizes)
	Right-Angle (X.K.e)				
<b>P</b>	Planetary + inline (P.RF)	24 - 500	88 - 4,165+	4, 5+	002 - 102 (11 sizes)
	Planetary + right-angle (P.KF)				002 - 102 (11 sizes)
<b>P2.e</b>	Planetary	24 - 124	15.2 - 332	2, 3	002e - 052e (6 sizes)
	Planetary + right-angle (X1KP.e)				
<b>P-X.e</b>	Planetary + parallel (X.F.e)	100 - 500	157 - 548	2, 3	042 - 102 (7 sizes)
	Planetary + right-angle (X.K.e)				
<b>MC</b>	Parallel (MC.P)	8 - 65	7.1 - 112	2, 3	02 - 09 (8 sizes)
	Right-Angle (MC.R)				
<b>M1.N</b>	Parallel	5.8 - 72	1 - 7.1	1	20 - 90 (8 sizes)





# 3-D Innovation

**SEW-EURODRIVE enables the replacement of units – even without original drawings.**



## No original drawings? **We have you covered.**

Whether you need newly engineered internal gearbox components or a complete drop-in drive package, SEW's experienced engineering team provides the expertise and support to deliver the right solution. Our 3D scanning capabilities capture critical drive package dimensions so we can engineer: transition plates, custom flanges, open gearing, guarding, couplings, torque arms, and more.

1

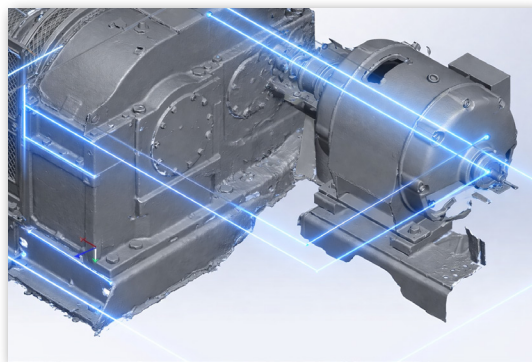
### SCAN



Onsite 3D scanning captures existing geometry with maximum accuracy.

2

### CAD MODEL

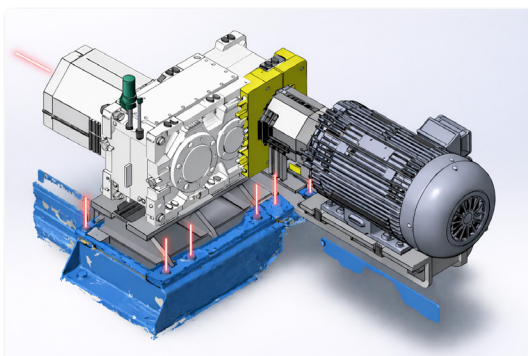


Creation of a digital 3D model from the captured geometry data.

**4-step  
process**

3

### ENGINEERING



Precise geometric comparison during design, analysis of all part dimensions including gear geometry and adaptation of any interfering contours.

4

### DELIVERY



Assembly and delivery of tailored drive package solution – designed for easy installation.

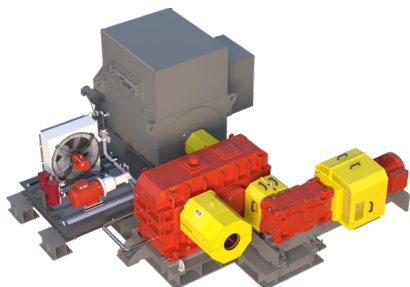


### 3-D Scan Case Study

A failed wastewater aerator threatened major regulatory risk and costly downtime. With no existing drawings, SEW-EURODRIVE used rapid 3D scanning and expert engineering to deliver a custom unit that was easy to install. Scan QR code to see our solutions that saved the day.



# Engineered Services



## Custom Drive Packages

SEW can **procure 3rd-party components**, design and fabricate engineered options, and assemble the drive package locally at our US facility to meet the exact needs of your application.



## TorqLOC®

SEW-EURODRIVE's patented TorqLOC® is the leading hollow shaft connection solution. Its **keyless tapered bushing design enables quick installation and removal** while accommodating wider shaft tolerances. Simple bushing changes also allow adaptation to different machine shaft diameters.



→ Now available with inch bushings

## Design to Order (DTO):

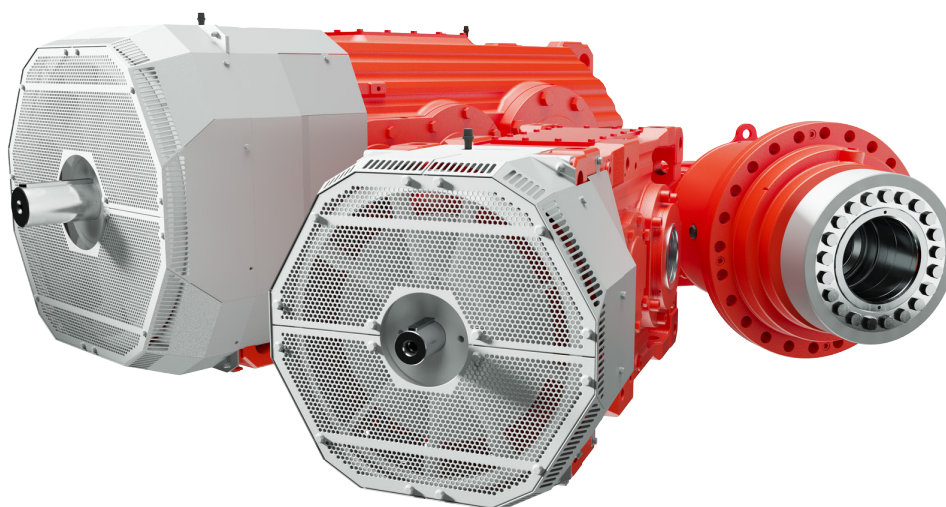
Thanks to its international production facilities, which collaborate closely within its global plant network, SEW-EURODRIVE can manufacture custom, "drop-in" gear units. These are produced in-house and are specifically tailored to each customer's application.



---

# HIG Improved Delivery Times

---



## Three Improved Delivery Options

---



**1.**

### **IMPROVED DELIVERY**

**FASTER THAN STANDARD  
LEAD TIMES**

When a little extra time is needed for added peace of mind. Benefit from improved lead times and stay on schedule.



**2.**

### **HIG TO GO**

**10-20 WORKING DAYS**

When deadlines are tight and project completion dates are uncertain, we can quickly customize one of our stocked units to keep your project moving forward.



**3.**

### **EMERGENCY BREAKDOWN**

**1-2 WORKING DAYS**

When a critical failure threatens to halt operations, we work overtime. Get the solution you need to restore production and minimize downtime.

# Service & Repair

We provide expert technical support from initial inquiry through commissioning, installation, and ongoing product support. With 24/7 breakdown assistance, you can rely on our experts throughout the lifecycle of your equipment — ***even for non-SEW-EURODRIVE products.***

## HIG Service Capabilities

- 50-ton crane lifting capacity
- 250-ton horizontal and vertical press capacity
- Advanced field services, including borescope inspections, airflow analysis, commissioning support, and on-site repairs
- Experienced heavy-industry gearing service and repair team
- Dedicated field service specialists, in-house technicians, service coordinators, and supervisors
- Comprehensive in-house services, including: disassembly, cleaning, wear-component replacement, mechanical repairs, reassembly, oil and metallurgical analysis, no-load testing, dimensional verification, magnetic particle testing, and sandblasting and repainting of units with heavy-duty OS4 paint protection.

## Customer Site Capabilities <sup>[1]</sup>

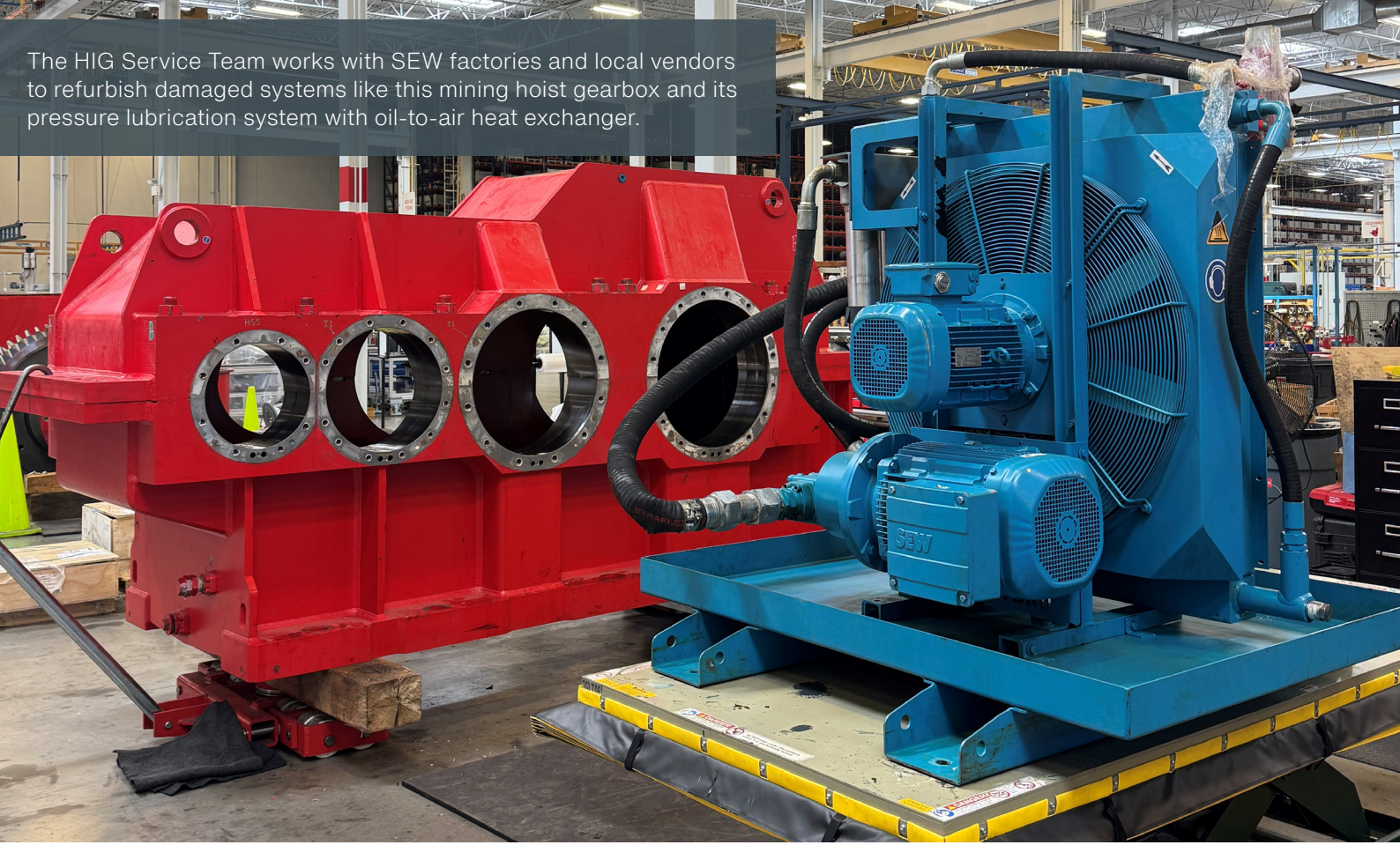
- Installation, start-up, commissioning, and laser alignment services
- Motion amplification analysis
- Condition monitoring and diagnostics, including thermal imaging, data logging, sound, and vibration analysis
- On-site 3D scanning of external components
- Equipment mounting assessment and recommendations for associated equipment modifications
- Motor brake inspection, cleaning, and adjustment
- Storage and long-term preservation options

<sup>[1]</sup> subject to SEW-EURODRIVE feasibility review and official scope.



SEW HIG routinely repairs large drive packages like this DTDC gearbox for the oilseed extraction industry. This newly assembled drive package weighs over 95,000 lbs!

The HIG Service Team works with SEW factories and local vendors to refurbish damaged systems like this mining hoist gearbox and its pressure lubrication system with oil-to-air heat exchanger.



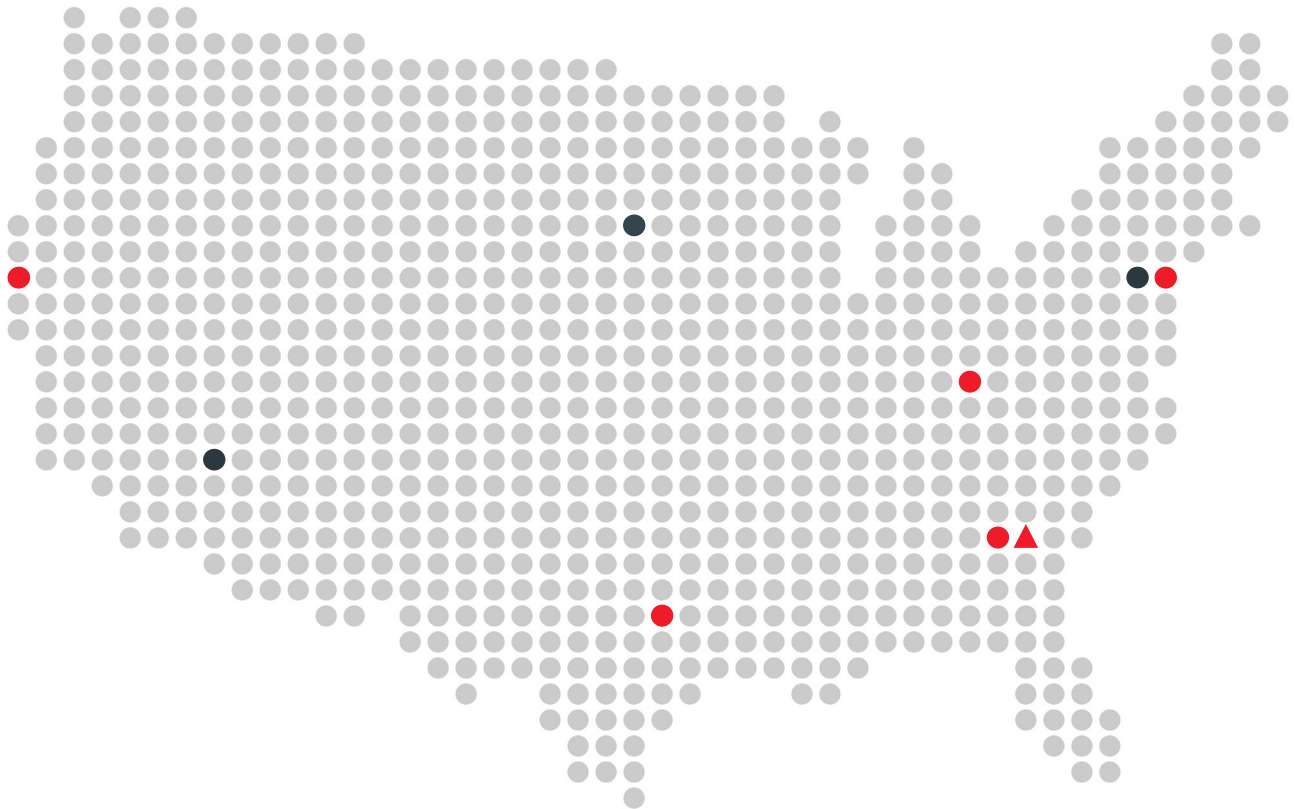
SEW Service offers startup and commissioning supervision for our products, including our massive segmented girth gears.



## ➤ About SEW-EURODRIVE

For nearly 100 years, SEW-EURODRIVE has been a global driving force in machine automation, built on a heritage of innovation, unmatched engineering excellence, and a passionate commitment to serving customers.

**Customer service is priority #1.**



▲ SEW-EURODRIVE Heavy Industry  
Gearing and Service

● SEW-EURODRIVE  
Service and/or Assembly

● Certified IG 360  
Service Partners

### U.S. Headquarters/Southeast Region

Wellford, SC  
P: (864) 439-7537  
cslyman@seweurodrive.com

### Southwest Region

DeSoto, TX  
P: (214) 330-4824  
csdallas@seweurodrive.com

### Western Region

Hayward, CA  
P: (510) 487-3560  
cshayward@seweurodrive.com

### Midwest Region

Troy, OH  
P: (937) 335-0036  
cstroy@seweurodrive.com

### Northeast Region

Bridgeport, NJ  
P: (856) 467-2277  
csbridgeport@seweurodrive.com

### Heavy Industry Gearing

Wellford, SC  
P: (864) 439-8792  
igssorders@seweurodrive.com  
igssquotes@seweurodrive.com



Contact Us

# Driving the world

[www.seweurodrive.com](http://www.seweurodrive.com)

# SEW EURODRIVE

9MD1965/0626